

W H A M

NEWS VIEWS AND REVIEWS



Official Publication of the Wichita Historical Aircraft Modelers, SAM 56,
and the Kansas Sunflower Squadron, FAC Squadron #23

Issue JE-67
Date: 3/01/07

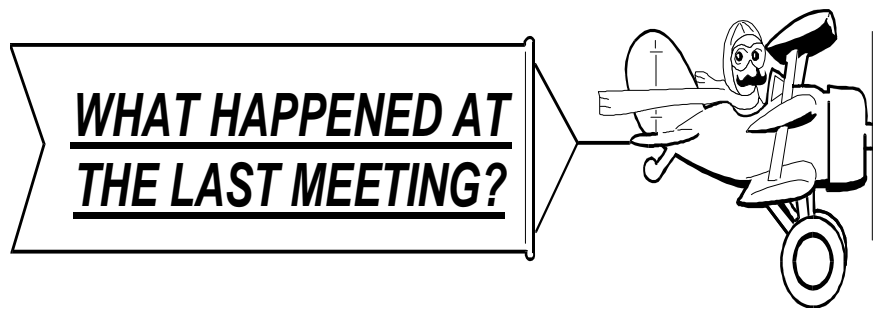
Death or Birth of the BOM ?

The latest issue of the NFFS newsletter, Freeflight, contains an interesting article by Norm Poti summarizing his feelings on the state of affairs over the 'builder-of-the-model' rule. He is fairly careful in presenting both sides in a fair manner. I didn't directly observe a personal stance, which is fairly unusual for the subject. The fact made is the rule needs to be reviewed in light of the advancement in building methods, supplies, participation and event. There is currently an 'Interpreted Rule Proposal' that the free flight contest board will be deliberating on for the Open Power events (101, 102-103, 104-105) that will require them to decide if the "average kit" contains pre-cut, prebuilt but uncovered assemblies. Since this proposal is the first to be offered, though effective for specific FF events, it will probably serve as the basis for future changes for the rest of the FF events. The proposal specifically adds "average kit is defined by the FFCB as a model that may contain precut unassembled or assembled parts [uncovered] subcomponents such as wings, stabilizers, rudders, fuselages; requiring a few hours of skilled assembly times and covering." This would be similar to the current BOM (see below), which contains a similar definition for control line kits.

I'm not going to go on record with my position. I encourage you to carefully consider your desires, be specific in considering why you support certain positions and record them. Forward them to the FFCB. It is possible that each event will eventually have its own uniquely detailed requirements. I suspect the debate over the next two years will prove to be an interesting sideline to our modeling activities, whether it will accomplish anything will remain of how well the proponents/detractors communicate. Copy of the current BOM, from the AMA website Rules:

Inside this issue:	pg
Meeting Minutes	2
Model Stuff	3
Featured Plan	4
Me BF109e No-cal	5
Upcoming Events	6

● **6. Builder of Model.** The CD shall make every reasonable effort to assure himself that each flier has completely "constructed" the model(s) he uses in competition, including the covering where used, with "constructed" to be interpreted as the action required to complete a model starting with no more prefabrication than the amount used in the average kit ("average kit" is interpreted by Control Line Aerobatics as a model that may consist of precut, unassembled parts or assembled (uncovered) subcomponents such as wings, horizontal and vertical stab, fuselage; requiring a few hours of assembly time and covering). Models which are completely prefabricated ("completely prefabricated" is interpreted as the model is ready to fly out of the box or in a few minutes (less than an hour) of assembly time.) and require only a few minutes (less than an hour) of unskilled effort for their completion shall be excluded from competition. (Control Aerobatics additionally interprets that any model, that is pre-covered in the box is excluded from competition). In the case of rubber-powered models (excluding Indoor duration models), commercially available balsa, plastic, and hardwood propellers may be used. Materials and design may be obtained from any source, including kits. The builder-of-the-model rule applies to every AMA event unless specifically noted otherwise in the rules governing that event.



January 27, 2007 Meeting Minutes

ATTENDEES:

George & Mary Kay Avila, Earl & Jane Griffith, Eldon & Roya Breazier, Ed & Char Salguero, Bill & Marilyn Schmidt, Jim & Marty O'Reilly, Ed & Mary Beth Ross, Jack & Eleanor Phelps, Jeff Englert, Tom Derber, and Bill Lindsay.

President Ed Ross called the meeting to order.

The minutes of the previous meeting were approved as published.

Jim O'Reilly gave the treasurer's report.

OLD BUSINESS:

None.

NEW BUSINESS:

Jim O'Reilly will publish the club membership list in March when most dues are paid up.

A club flying notification system was discussed, and a committee was formed to come up with proposals on how to work it.

Jim O'Reilly gave a report on the Southwest Regionals contest held in AZ. The weather wasn't cooperative.

Membership dues for 2007 are now due.

Payment of the annual stipend to the flying field land owner was approved.

Ed Salguero suggested an inter-club sale of items that were surplus to the members. These could possibly be published in the club newsletter.

SHOW AND TELL:

Bill Schmidt brought a rubber scale Cessna C-106 Loadmaster from Dave Stott's dwgs, along with pictures of his dad working on the two original airplanes at Cessna in 1943. Bill also had a 25 cent Comet P-40C done up in complete A.V.G. markings for pilot Tommy Haywood. Jim O'Reilly displayed a Bob Romeiser Crusader rubber endurance model in red and yellow colors. Ed Ross had several natural balsa with panel lines, profile gliders of an F-14, F-15, Mig 29, SU-27, and a F9F-5 Grumman Panther. Tom Derber brought a Dumas kit Hughes H-1 racer in blue and silver, and a Comet dime scale of the Stinson 105 in red and white colors.

WHAM modelers and friends.

As a fund raiser for WHAM (SAM-56), I have several partial complete models and Klarich Partial Kits, to be offered to those interested, for a donation to our club. The items will need to be picked up at my house or at a scheduled club event. The items can be viewed or picked up at my house by appointment.

Jack Phelps 838-8144

5149 N. Armstrong St.

Wichita, KS. 67204

1. Struck "Record Hound", 70 inch span, for R/C assist, Fuselage, Wing and Stab framed no plans. (LaMoine)
2. Goldberg Clipper, Very Old Free Flight, covering has been removed. Some repair needed before covering. No plans but have all parts. (Jim Loop)
3. Goldberg Falcon 56. Part of 2 kits, appears to be enough to build one complete plane. (Jim Loop)
4. Sig Kadet Sr. Never completed, appears to have all parts. Some structure needs repair due to hangar rash. (Jim Loop)
5. Playboy Sr. full size, wing covered, fuselage needs repair before covering, No rudder or Plans.
6. Playboy Cabin full size, Fuselage, wing and stab, No rudder or plans. (LaMoine)
7. Klarich Short Kit RC-1, 84 inch span, 2 sets of plans. (LaMoine)
8. Box of Klarich short kit parts, appears to be about 3 different kits, no plans. (LaMoine)
9. Klarich Short Kit Pacer "C", 60 inch span, no plans. (LaMoine)
10. Box of Klarich short kit parts, may be Quaker and Bomber parts, no plans. (LaMoine)
11. New Ruler, Large Free Flight, Silk covered, must be recovered and Repairs to wing. (Dan Smith)
12. Wakefield fuselage and wing, wing must be recovered, no stab. (Dan Smith)
13. Class A Free Flight, No stab. (Dan Smith)

The Magnificent Mountain Men Proudly Announce the First Annual

Pikes Peak Ceiling Climb

Indoor Model Airplane Contest & National Cup Challenge

March 24th & 25th, 2007

Flying site is the historic Colorado Springs City Auditorium, downtown, corner of Weber and Kiowa Streets – 37 ft. smooth ceiling

Flying Hours: 9:00 AM to 5:00 PM both days.
(practice & fun flying during the contest is permitted but official flights have right-of-way. Please exercise courtesy and common sense!)

Schedule (subject to change per demand for airspace)

Saturday, March 24th

9:00 AM – 2:00 PM **ULTRALIGHT MODELS ONLY** (models not more than 1 gram)
F1D – Regional Team Qualifier – Special Trophy to the Winner!
35cm, Intermediate Stick, AMA Easy B (sub 1-gram only; no F1Ls!).

2:00 PM – 5:00 PM **LIGHTWEIGHTS ONLY** (models not more than 2 grams)
FIL, Easy B, Ministick, A-6. *At Your Own Risk: ULTRALIGHTS*

Sunday, March 25th

9:00 AM – 12:00 PM **GLIDERS ONLY**
Hand Launched Glider, Unlimited Catapult Glider, Standard Catapult Glider.

12:00 PM – 3:00 PM **HEAVYWEIGHTS** (models heavier than 2 grams)
FAC Peanut Scale, FAC No-Cal Scale, S.O. "Wright Stuff", P-24, Bostonian 7 gram, Junior Rubber (J) **, Limited Pennyplane, Open Pennyplane/FIM combined, WWII No-Cal Mass Launch. *At Your Own Risk: LIGHTWEIGHTS AND ULTRALIGHTS*

3:00 PM – 5:00 PM **LIGHTWEIGHTS ONLY** (models not more than 2 grams)
FIL(J)(SO), Easy B, Ministick, A-6. *At CDs discretion: LPP and F1M/PP*

*Flown to current Science Olympiad rules. **Any rubber powered model, Juniors only (15 and under)

Important Information:

- The following events will be awarded NFFS National Cup points: Rubber Cup: Limited Pennyplane, F1L, Ministick, Wright Stuff, Glider Cup: HLG, UCLG, SCLG.
- Contest directors: Rob Romash, 719-359-6999, egrain1@yahoo.com & Don DeLoach, ddeloach@comcast.net.
- Link to AMA rules: <http://www.modelaircraft.org/templates/ama/PDF-files/Rulebook/indorf.pdf>.
- Link to FAC rules: <http://www.theplanpage.com/things/FAC%20Rules%202005.pdf>.
- Link to NFFS National Cup rules: <http://www.freeflight.org/competition/IndoorNationalCup/info.htm>.
- Entry fees per day: Open: \$10 - unlimited events. Jr./Sr. \$1 - unlimited events.
- Awards: MMM season points, NFFS National Cup points, bragging rights, maybe some merchandise!
- Sorry, no RC flying.
- Tables and chairs provided on site.
- Nearby Hotels: Clarion Inn (1/4 mile) 719-471-8680; Econolodge (1 mile) 719-636-3385.
- Group Dinner and awards after Sunday's flying. Restaurant within 1 mile.

FLYING ACES

First Annual

Southwestern

Regional Contest

Flying Site Location
SCAMPS Field
Perris California



May 4, 5 & 6, 2007

Scale Judging Friday

FAC Rubber Scale Sat/Sun-3 Flights Same Day

WWII Combat Saturday

FAC Old Time Rubber Stick/Cabin Combined-Saturday

WWI Combat Saturday

FAC Power Scale Sat/Sun-3 Flights Same Day

Greve/Thompson Race Sunday

FAC Jumbo Scale Sat/Sun-3 Flights Same Day

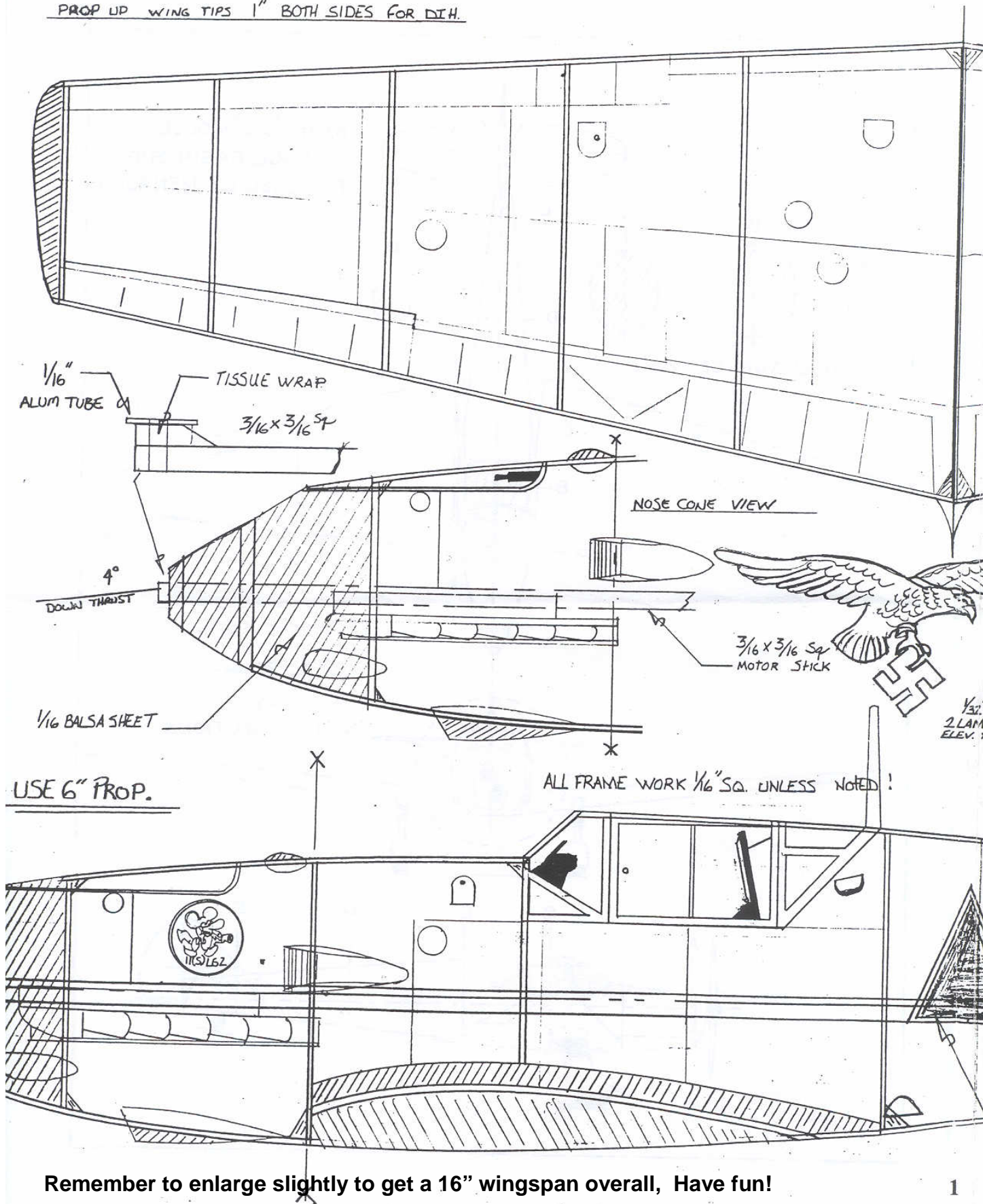
Jimmie Allen Sunday-Prop on Plan or 33% Wingspan

Horde Mass Launch Sunday for 3 Places

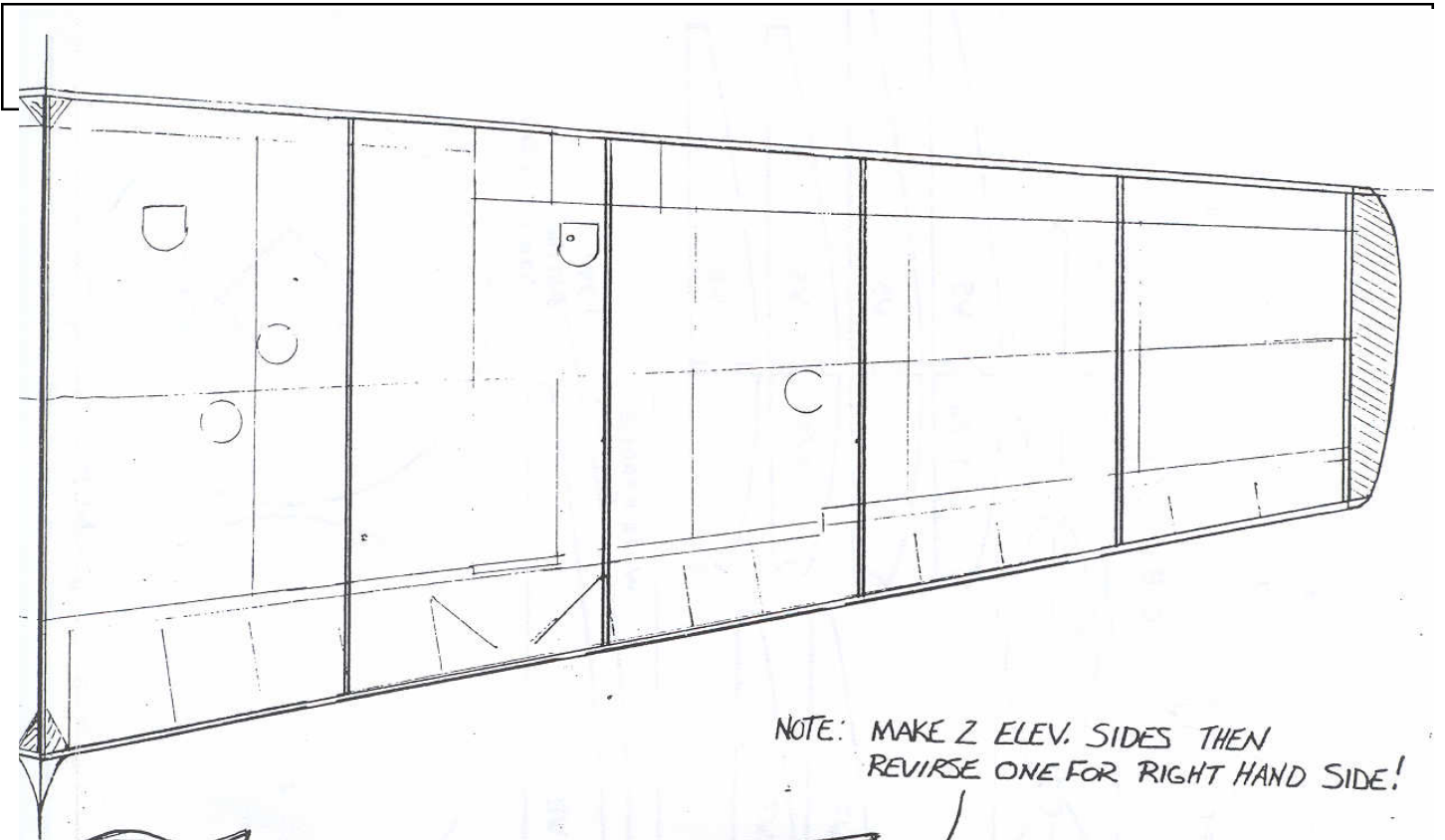
Contest Directors: John Hutchison / Roger Willis (760) 603-8877

Visit facsouthwestregional@yahoo.com for more event information

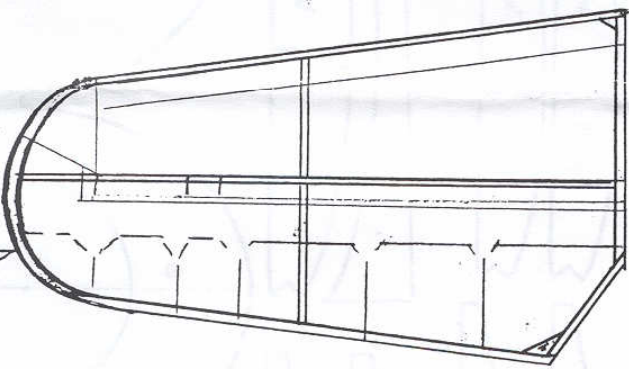
PROP UP WING TIPS 1" BOTH SIDES FOR DIH.



Remember to enlarge slightly to get a 16" wingspan overall, Have fun!

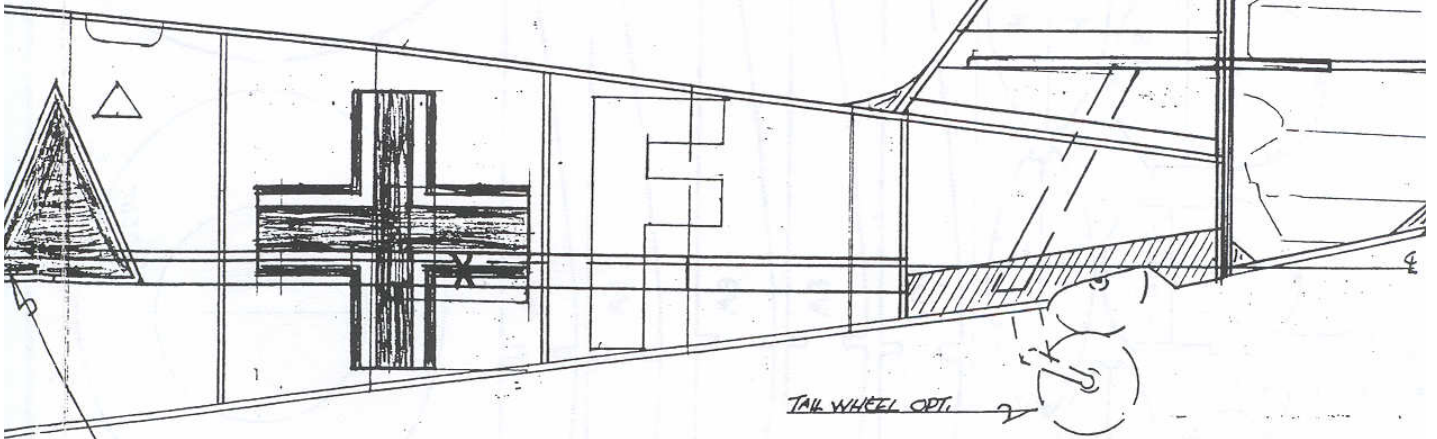


NOTE: MAKE 2 ELEV. SIDES THEN
REVISE ONE FOR RIGHT HAND SIDE!



$\frac{1}{32} \times \frac{1}{16}$
2 LAMS FOR
ELEV. TIPS

WET FORM
RUDDER
 $\frac{1}{32} \times \frac{1}{16}$ STRIP
2 LAMS.



MOTOR STICK LOCATION
X ON PLAN LOCATES HOOK POINT

TAIL WHEEL OPT.

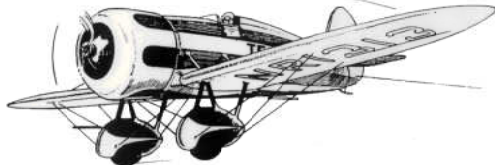
1

MESSERSCHMITT BF 109E		NO-CAL SCALE 1/16"
CLOUD BUSTERS PLAN #2	BY: PAUL A. JURCZYSLYN	NOV 2000

WHAM – News, Views and Reviews
Jeff Englert
10118 Sterling Court
Wichita, KS 67205



FLYING ACES



**Sunflower Squadron
Wichita, KS**

Date: 3/01/07 ISSUE JE-67

→ The next SAM 56 Dinner Meeting will be at:

Cortez Mexican Restaurant 344 W. 29th St.

Saturday, March 10, 2007
Social Hour @ 6:00 PM, Dinner @ 7:00 PM.

Upcoming Events:

- | | |
|----------------|--|
| → March 10, | Club Meeting |
| → Apr 7, | Kansas Science Olympiad State Championships — WSU |
| → April 14-15, | WHAM OPENER — Events! - SAM 1/2A Texaco R/C, NFFS 1/2A NOS FF, FAC Moth, FAC Dime Scale |

Membership Information:

Open to all interested AMA members, founded to encourage and promote the model airplane building hobby.
Member dues \$20 annually, Subscription only; \$12 annually, \$18 foreign.
Send checks to Jim O'Reilly, 4760 Battin, Wichita, KS 67220.
All memberships and subscription renewals are due January 1st of the new year.

Club Officers:	President: Ed Ross,	Vice-President: Bill Lindsey
	Treasurer: Jim O'Reilly, 744-0856	Secretary: Bill Schmidt, 744-0378

ATTENTION: The new year requires you (unless your address label says different) to submit a monetary remuneration to continue membership in the club and to receive this newsletter (if mailed). To those that are on the email distribution, a monetary contribution is always welcomed. Note even though the inflationary trends of the world continue, (printing cost increases, etc.), the amount of our yearly dues didn't increase (**STILL \$20**). Please send your dues or subscription fee (**STILL \$12**) to our club treasurer. Please consider a multiple year renewal, its cheap!