

WHAM



Issue JE-100
October 26, 2012

Official Publication of the Wichita Historical Aircraft Modelers, SAM 56,
and the Kansas Sunflower Squadron, FAC Squadron #23

NEWS, VIEWS and REVIEWS

Definitions of various indoor flying terms

- Torque** - 1 - A force acting to roll the plane along the longitudinal axis. It is a reaction to the propellers rotation and is greatest at the beginning of the flight when the model is launched. 2 - A measure of the energy in a wound rubber motor.
- ROG** - Rise Off Ground. A flight profile where the model has landing gear and is launched with the plane sitting on the ground as opposed to a hand launch.
- Cross Section of motor** - A term that refers to the size of the motor (not the length). Generally most indoor planes are flown on a single loop of rubber and the currently available rubber has a nominal thickness of .042" so this term would refer to the width of the rubber used (i.e. .038", .054", etc.) in a single strand.
- Propeller Pitch** - A theoretical number that describes how far the propeller would move forward with a single rotation if there were no slippage. Higher pitches require greater motor cross section to turn them and generate more torque that the plane must counteract, but they also slow down the RPM of the prop possibly allowing a longer motor run.
- Tan I** - A brand name of special rubber strip made specifically for model airplane flying that was produced in the late 80's and early 90's.
- Tan II** - A brand name of special rubber strip made specifically for model airplane flying that is currently produced and sold by FAI Model Supply.
- Stab** - The horizontal stabilizer of a plane.
- Decalage** - The difference in the angle of attack between the wing and the horizontal stabilizer. Generally the main wing will have a greater angle of attack than the stabilizer. The greater this difference is generally the more stable the airplane is in pitch and the quicker it will recover from a ceiling bump, but it will generally have more drag than a plane with a lesser difference.
- Incidence** - Another term for angle of attack.
- A, B, C Grains** - Descriptions of different cuts of balsa. Determined by the orientation of the surface of a sheet to the rays in the wood. Each cut exhibits different characteristics.
- Ambroid** - A brand of glue frequently used by indoor fliers. It is based on acetate plastic dissolved in a solvent. normally diluted to a thinner consistency with acetone and frequently plasticizers such as TCP and DOP are added to eliminate shrinkage.
- Thrust Bearing** - The fitting that holds the prop shaft to the plane.
- How one can "Drill a small hole (0.016")"** - By using very small drill bits. Commercial number sized twist bits are available down to .0135" for a #80. Smaller holes can be drilled by grinding the end of a piece of music wire to form a spade type drill bit.
- 45 degree station** - A method of describing the pitch of a prop by giving the distance from the center of the prop to the location at which the prop forms a 45 degree angle to the plane of rotation. For a lower pitch prop this will be smaller (closer to the prop shaft) that for a higher pitch prop.

From www.indoorduration.com

September 15, 2012 Meeting Minutes

ATTENDEES:

Mary Kay & George Avila, Paula & Jeff Englert, Jane & Earl Griffith, Darlene & Richard Kirkland, Linda Powell, and Dan Walton

President Avila called the meeting to order.

The previous meeting minutes were approved.

The treasurer's report was presented by George A for the absent Jim O'.

OLD BUSINESS:

Reviewed the upcoming contest flying schedule; at that time the Perry, Denver, Muncie Nats, Forth Worth and 2nd Perry Freeflight contests were ahead.

NEW BUSINESS:

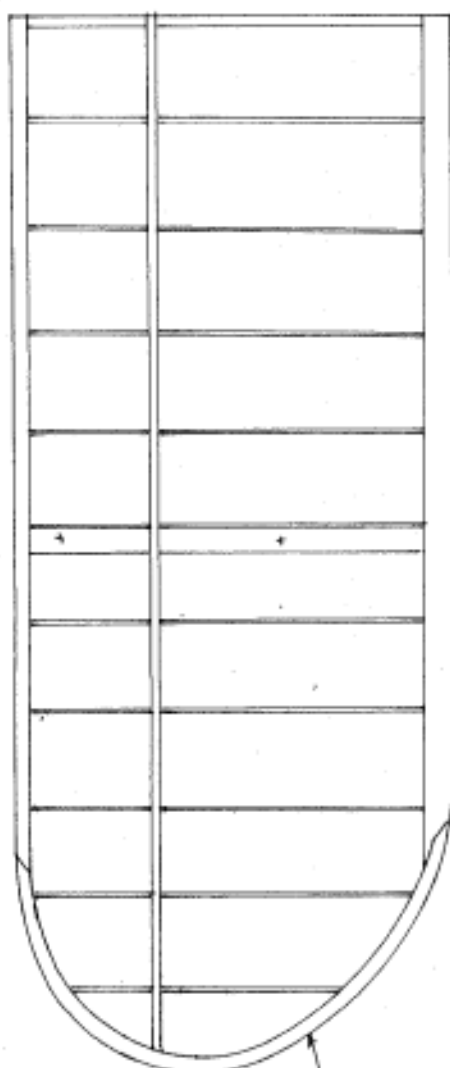
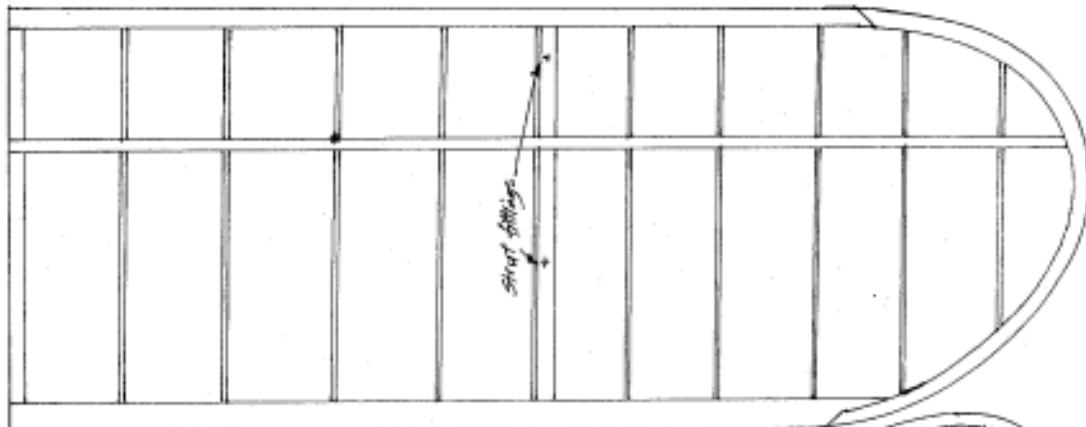
Elections will be held at the November meeting, think about contributing through service!

SHOW AND TELL:

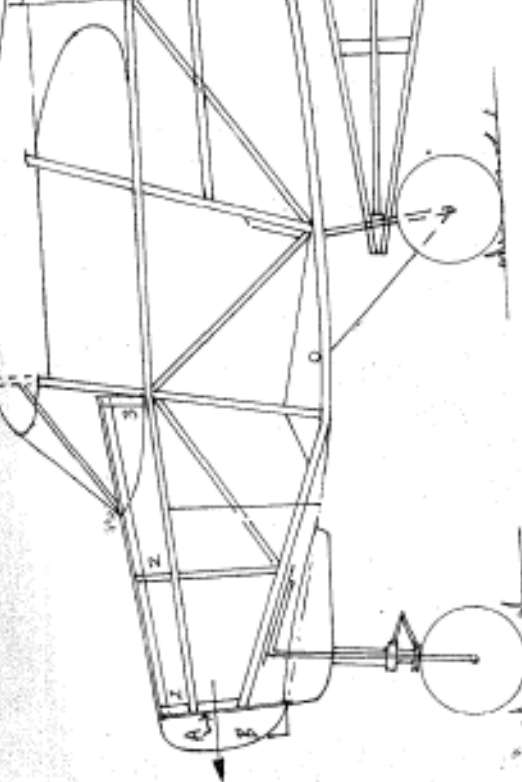
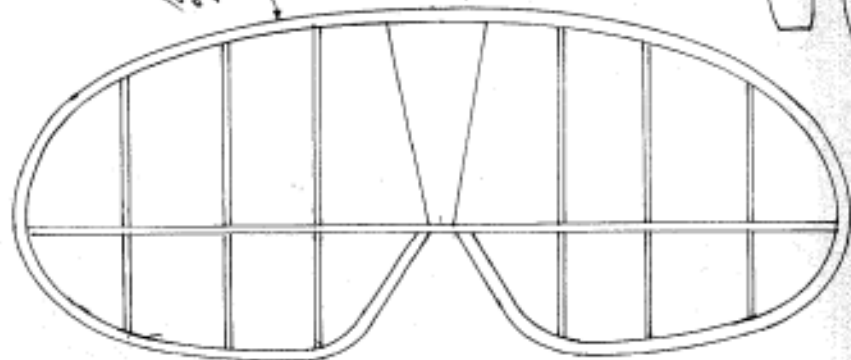
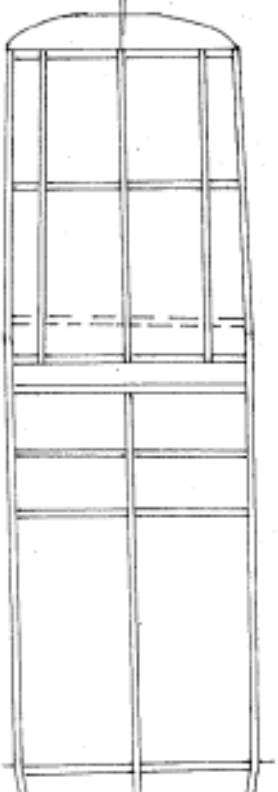
Linda Powell display her new 24" Discus Launched Glider built from Stan Budenbohm plans.

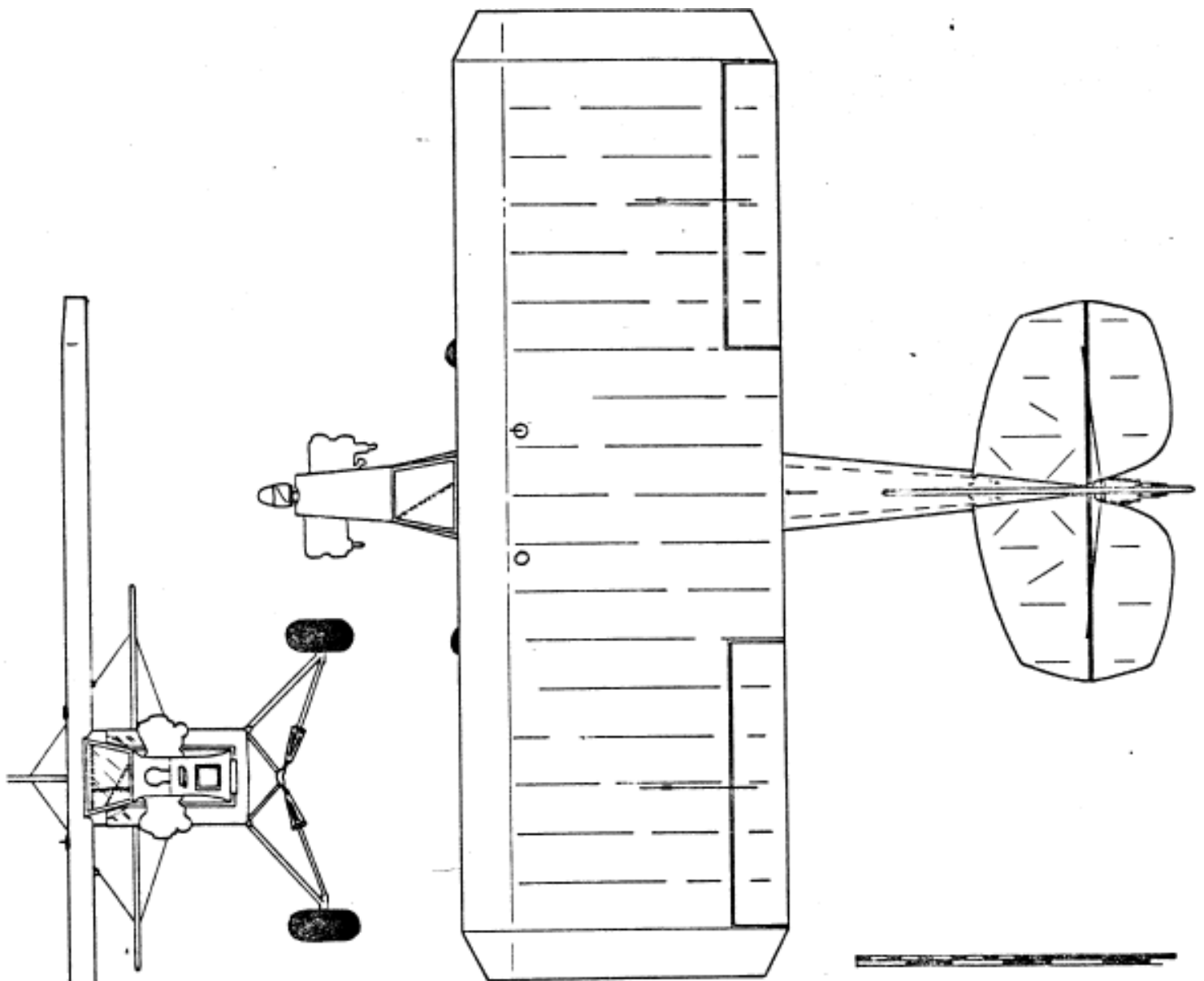
Earl Griffith – reported on his 1st place finish at the Nats! He also passed out a few models that no longer fit into his flying plans. He handed out a 1939 Korda Dethermalizer, a Casno Stick and a Red Buzzard. A couple of modelers went home HAPPY!

Dan Walton brought in his KISS RC plane with its latest modification. A standard(ish) aviation scheme lighting (Red/green & white lights) has been added as an aide in night time flying. The LED lighting strips that he had shown before were added to the wings and fuselage. Illuminated, by the RC control system battery possible due to the low load, the plane was quite bright. Dan described some of flying experiences to the delight of the crowd....

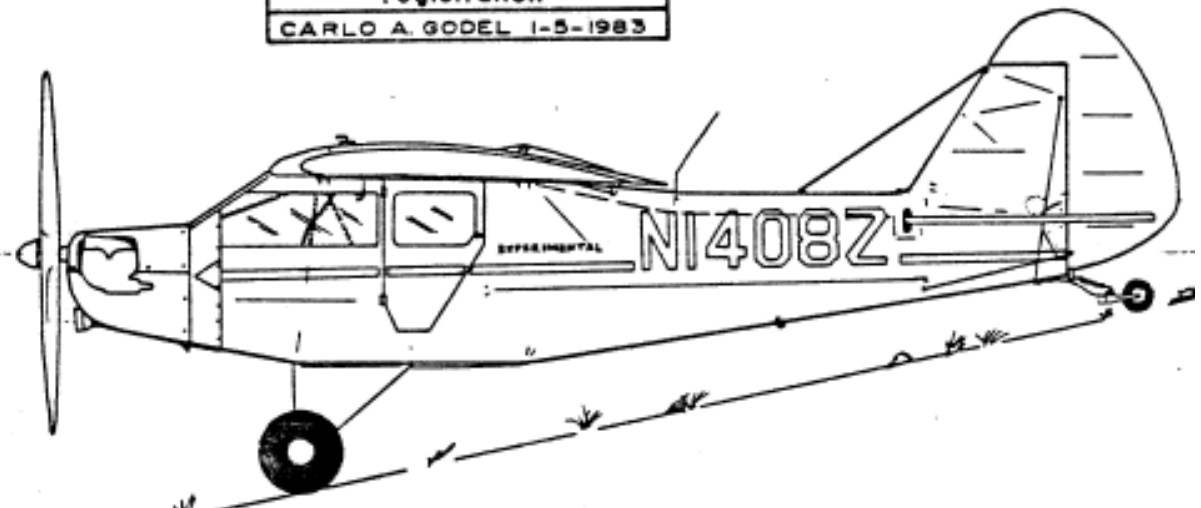


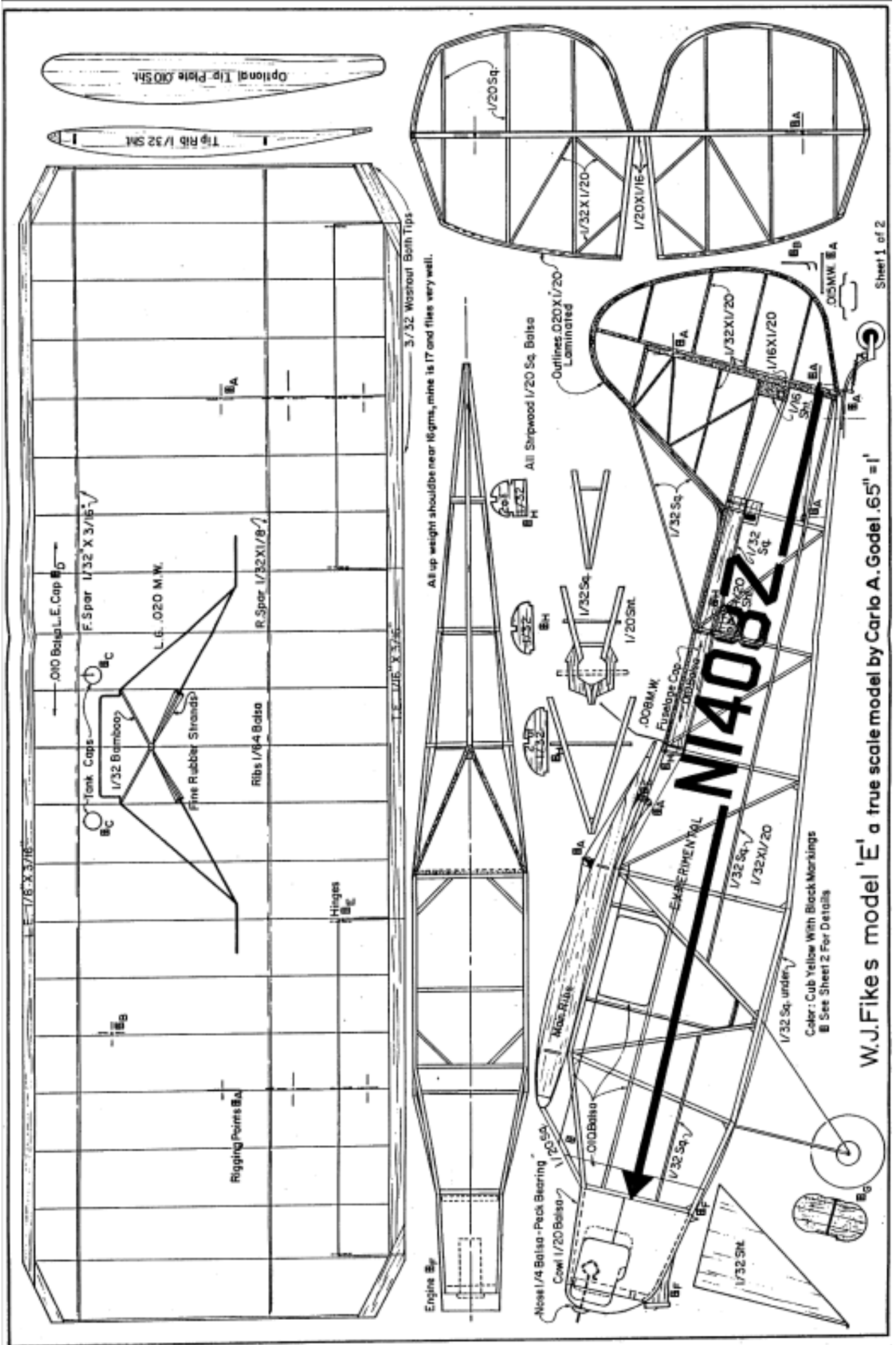
PIPER TRIPACER
 DRAWN FOR FLYING ACE'S DOWNUNDER
 by Lloyd Willis 2006





W. J. FIKE'S MODEL 'E'	
Span 20-0	built ... 1971
Length 19-2	
Color. Yellow, black trim & registration	
CARLO A. GODEL 1-5-1983	





W.J.Fikes model 'E' a true scale model by Carlo A. Godel .65" = 1'

WHAM – News, Views and Reviews
Jeff Englert
10118 Sterling Court
Wichita, KS 67205



**FLYING
ACES**



**Sunflower Squadron
Wichita, KS**

The next SAM 56 Dinner Meeting will be at:

Louie's Grill & Bar

9747 E 21st St N, Wichita, KS 67206

(SE corner of Web and 21st N)

(316) 636-5422

Saturday, November 3rd, 2012

Social Hour @ 6:00 PM, Dinner @ 7:00 PM..

Upcoming events:

Nov 3-4 Meeting Louie's -- Elections for 2013

Contest Events: 1/2 A Texaco, small rubber combined (150 in²),
Cat glider, and 1/2A early NOS

Membership Information:

Open to all interested AMA members, founded to encourage and promote the model airplane building hobby. Member dues \$20 annually, Subscription only; \$12 annually, \$18 foreign. Send checks to Jim O'Reilly, 4760 Battin, Wichita, KS 67220. All memberships and subscription renewals are due January 1st of the new year.

Club Officers: President: George Avila, 683-1474 Vice-President: Bill Schmidt 744-0378,
Treasurer: Jim O'Reilly, 744-0856 Secretary: Jeff Englert, 722-7491