

# Minutes from last meeting

9/10/2016

## **ATTENDEES:**

Les DeWitt, Jeff Englert, Jane & Earl Griffith, Regina & Marty Kline, Jeanette & Kent Peters, Linda & Chuck Powell, Marty & Jim O'Reilly, Ed Salguero

President Powell called the meeting to order,  
Minutes from the last meeting were reviewed.  
Ex-Treasurer Jin O'Reilly reported that the club assets remained positive.

## **OLD BUSINESS:**

The field was reported to have been mowed.

## **NEW BUSINESS:**

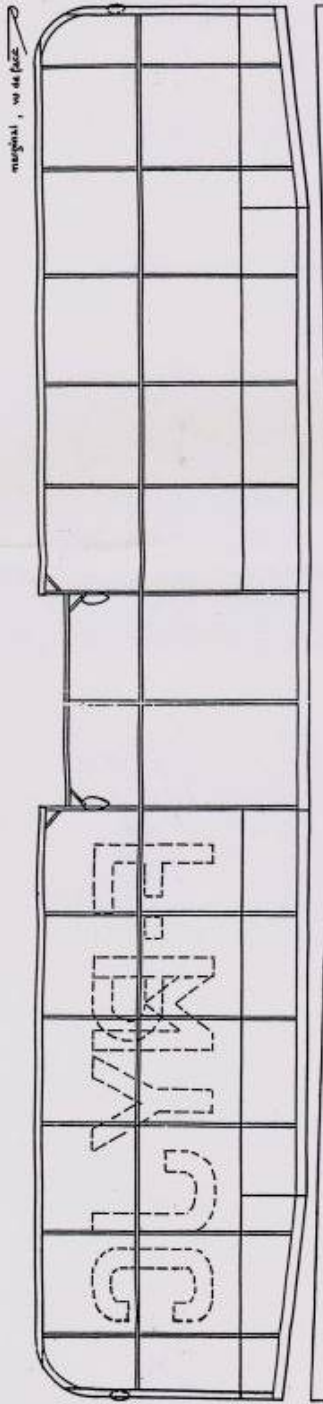
Denver contest results were discussed.

## **Show & Tell:**

Kent Peters brought in Bill Schmidt's latest project. Built from plans out of the magazine "Mechanic Illustrated", the 'Skyhopper' with an octagonal fuselage cross section, powered on 6 strands of 3/16<sup>th</sup> inch rubber using a craved 11 inch prop, Silk covered.....

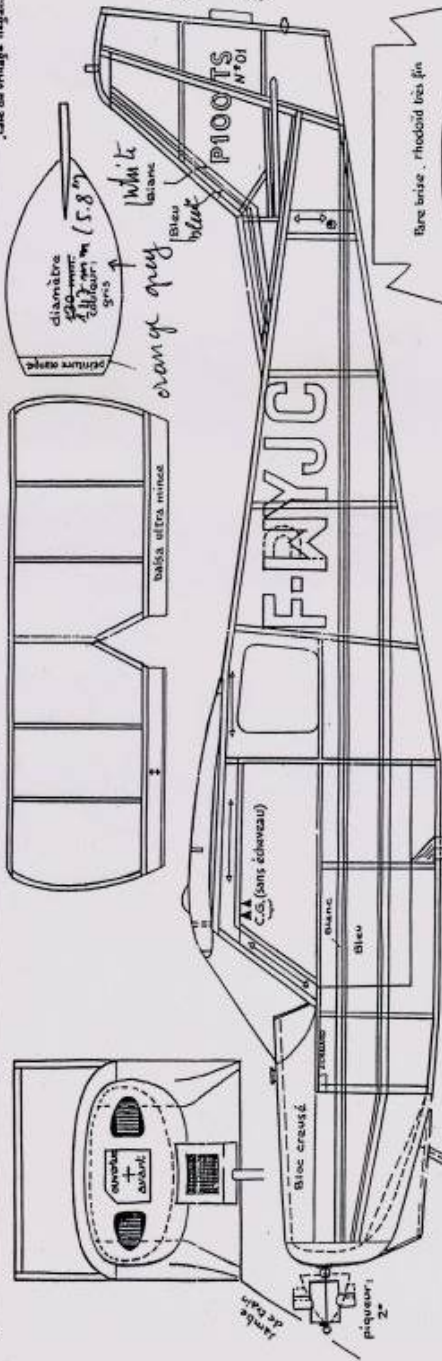
**Next Meeting is Elections for 2017,**

**Plan on serving!**



mugshot, w de face

cale de village négatif (s-c)



diamètre 40 mm (5.8")  
ouverture orange  
white blanc  
orange orange  
bleu blue  
bleu blue

balsa ultra mince

C.S. (sans échveau)

blanc

bleu

bleu traversé

jambes de train

piquetur: 2°

Barre brisée, rhodoid très fin

tableau de bord

attache jambes de train

fil au bois

dans le capot moteur

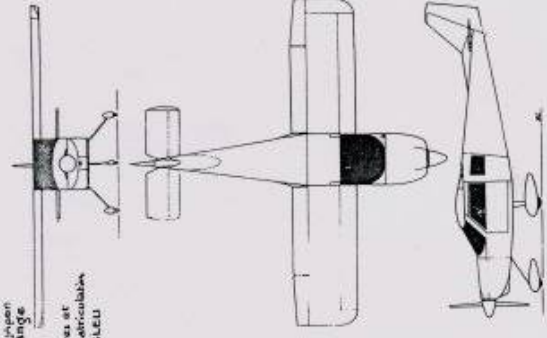
à droite

Color scheme—orange overall, blue and white striping on fuselage and rubber fin. Blue registration letters on wing fuselage and fin/rubber. Registration can be either one shown on plan—same scheme. Photos of both aircraft show no wheel pants.

Airfoil on plan is illegal for FAC. No undercarriage allowed.

Appareil moteur en orange

lettres et matriculation BLEU



Attention! dérive porte 3.2 mm. à droite du fuselage

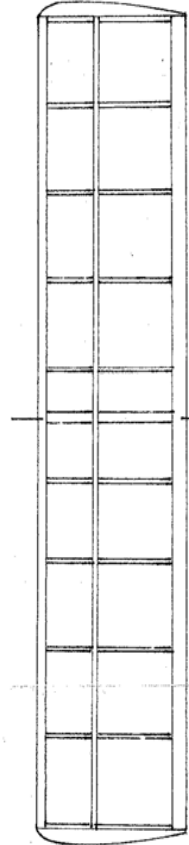
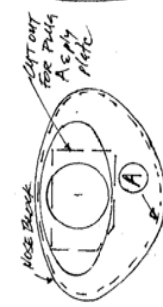
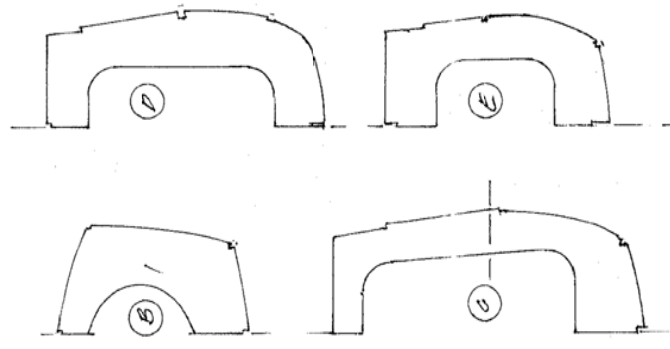
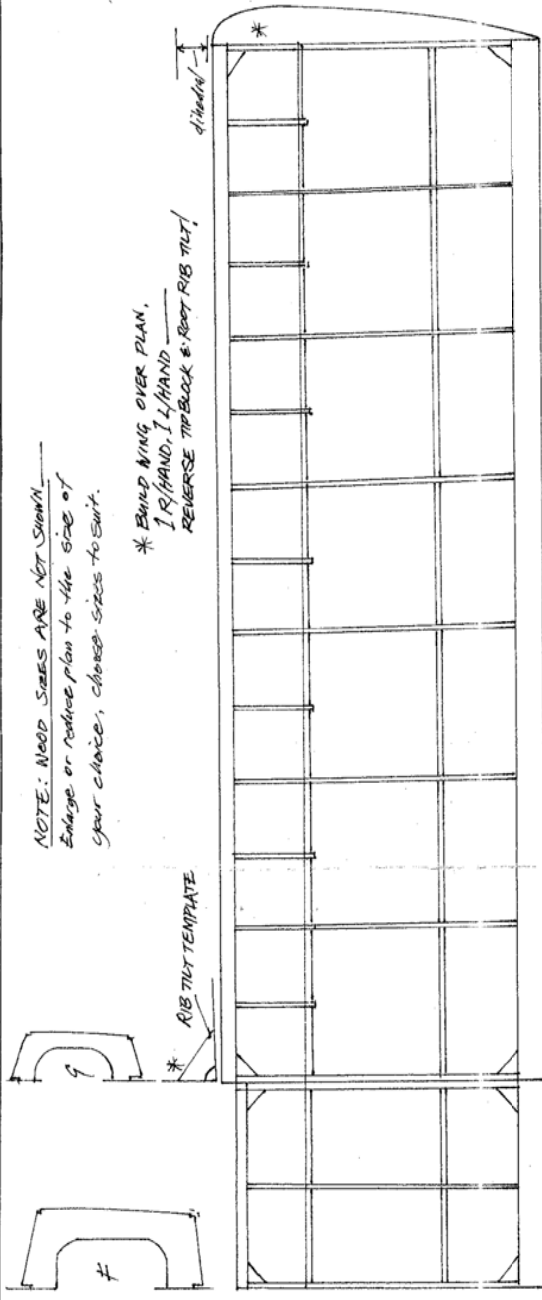
révisé mai 1983

POTTIER 100 TS, base aux MUREAUX de Aviation Magasin du 15.7.1982 N°83

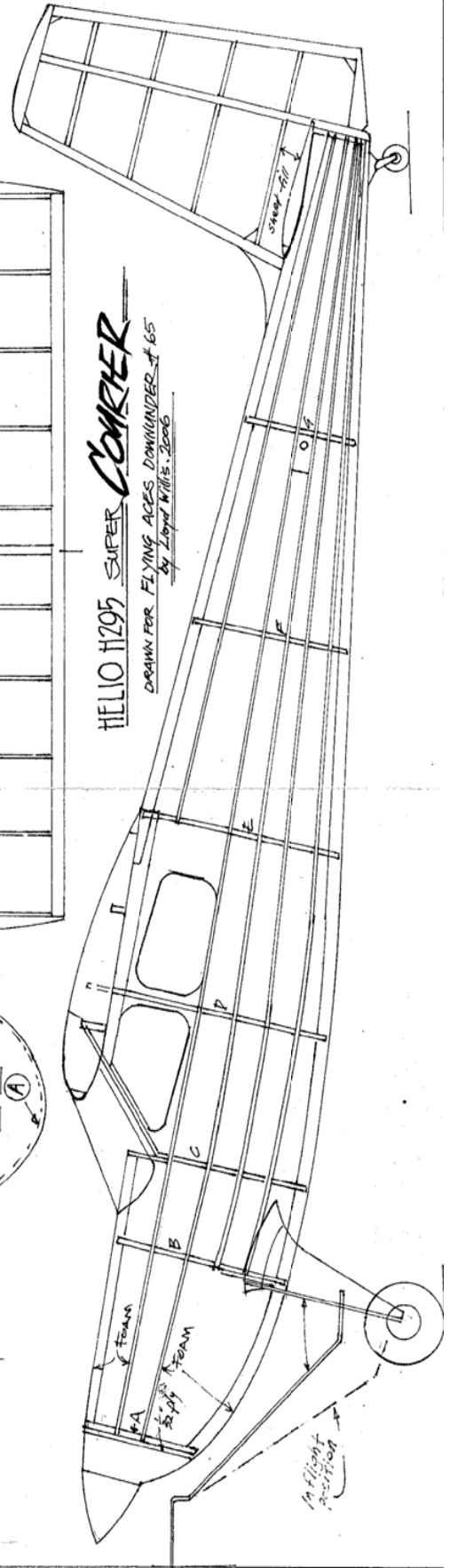
TS.11.1980.4790

NOTE: NEED SIZES ARE NOT SHOWN  
 Enlarge or reduce plan to the size of  
 your choice, choose sizes to suit.

\* BUILD WING OVER PLAN,  
 I R/HAND, I L/HAND  
 REVERSE TIP BLOCK & ROOT RIB TILT!



HELIO H295 SUPER **CORNER**  
 DRAWN FOR FLYING ACES DOMINION # 65  
 by Lloyd Willis, 2006



# WHAM – News, Views and Reviews

Jeff Englert  
10118 Sterling Court  
Wichita, KS 67205

*The next SAM 56 Dinner Meeting will be at:*

## **Mediterranean Grill**

**335 S Towne East Mall Dr., Wichita, KS 67207**

(316) 651-5599

**Saturday, November 5 , 2016**

Social Hour @ 6:00 PM, Dinner @ 6:30 PM..

Upcoming events:

Club Events: 1/2A Texaco, Jimmy Allen, C/HLG, or as arranged.....

Membership Information:

Open to all interested AMA members, founded to encourage and promote the model airplane building hobby.

Member dues \$20 annually, Subscription only; \$12 annually, \$18 foreign.

Send checks to Phil Burress, 638 N. Terrace Dr., Wichita, KS 67208

All memberships and subscription renewals are due January 1st of the new year.

Club Officers:

President: Chuck Powell, 655-3154 Vice-President: Bill Schmidt, 744-0378,

Treasurer: Phil Burress, 682-7374 Secretary: Jeff Englert, 722-7491