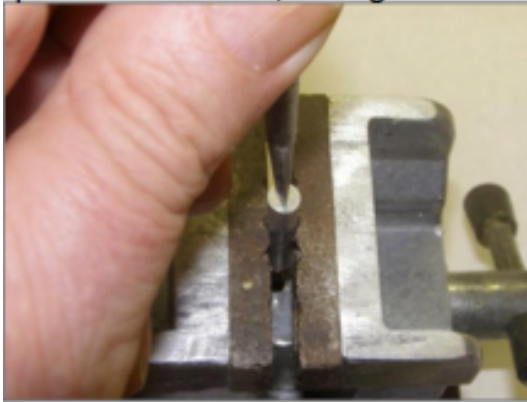


SOLDERLESS FREEWHEELING LATCH

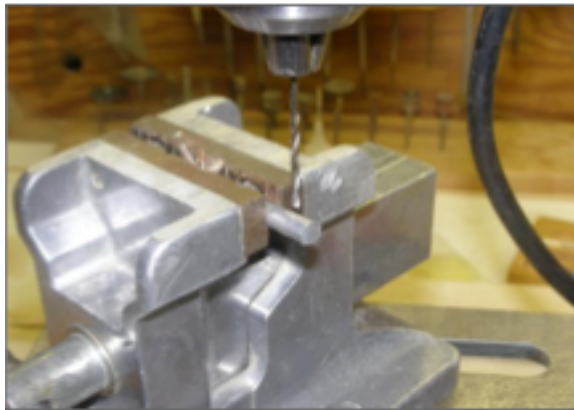
By Hank Sperzel

Here is my version of a solderless Freewheeling latch. It is very easy to make with simple hand tools. Take a short length of 3/16" Aluminum rod (KSB) and mount it vertically in a vice. That "V" in the jaws keeps it vertical and with a center punch pricked the center. I used my drill press to drill a 3/32" hole about 3/8" deep and tapped it for a 4-40 set screw. If it's not quite in the center, no big deal.



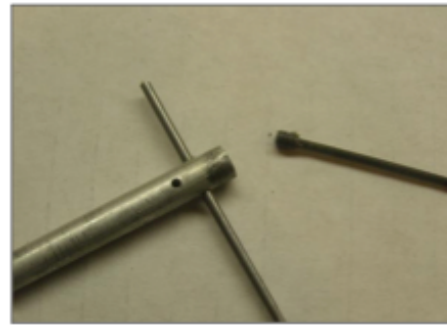
Center Punching

Using the center punch mark about 1/4" in from the tapped end and drilled a 1/16" hole, or what ever size of prop shaft you use through the rod.



Drilling the Hole for the Prop Shaft

Rotate the rod 90% and drill a 1/32" hole about 1/4" from the prop shaft for the bale.



Prop Shaft Installed and hole for the bail drilled

Insert a short piece of 1/32" wire for the bale and bend a "Z" like this. Put the prop on the shaft before making the last bend to insure the bale is long enough



The complete unit with the prop installed

The short piece of rubber tube is to keep the prop from falling off. File a flat on the prop shaft for the set screw to secure the latch.