

PHOENIX MODEL AIRPLANE CLUB

HAVING FUN WITH MODEL AIRPLANES SINCE 1937

VOLUME 13 NUMBER 4

<http://www.freeflight.org/PMAC/>

APRIL 2008

Colorado's Magnificent Mountain Men get their field back !

Some details;

The negotiating team of Pete McQuaid and Chuck Etherington from the MMM and Mike Fields and Don Uhl from SAM-1 have done a great job of working with the State Land Board Lowry Range Manager, Mrs. Melisa Yoder to come up with the policy for use of chase bikes on the field.

Motorcycle Use Policy

Follow the roads wherever possible and not to follow the planes cross-country.

If the plane lands within walking distance of the road, park the bike and retrieve the plane on foot. If not, take the shortest path possible to the plane in order to retrieve it.

Avoid riding through noxious weeds. The Leafy Spurge is the most common and photographs of this plant are in the CD briefcase

YOUR Contest Board

AMA Free Flight rules are made / changed by the AMA Contest Board thru an interesting procedure which depends on your input.

I once sat on this board for a brief period when I lived in the Northwest. An opportunity to work with some old friends in Texas caused me to resign the position. I was amazed by the amount of effort put in by board members sorting thru the various rules proposals and counter proposals.

The whole process depends on input from active modelers like you. You can keep up with proposed rule changes on the AMA web site or by contacting your district board member. This is a hard working bunch and deserve our thanks and support.

Cheers,
Steve

FREE FLIGHT CONTEST BOARD

- I: Art Ellis, 84 Denison Dr., Guilford CT 06437
- II: Bradley Bane, 60 Lake Ave., Lyndonville NY 14098
- III: Rudy Klinber, 2021 Lakeland Ave., Lakewood OH 44 107
- IV: Jim Bocckinfuso, Box 875, Hardy VA 24101
- V: Ron Sharpton, 1290 County Rd., Daytona Beach FL 32119-2469
- VI: Chris Matsuno, 8576 Ginger Dr., St. John MO 63114
- VII: Bill Shailor 2317 Clawson Avenue, Royal Oak MI 48073
- VIII: Mike Fedor, 2500 San Diego, Arlington TX 76015
- IX: Jerald Murphy, 9 Via Escondido Valle, Manitou Springs CO 80829 (Board chairman)
- X: Terry Kerger, 709 Domingo Dr., San Gabriel CA 91775-2108
- XI: Glenn Grell, 31748 Driver Rd., Tangent OR 97389



NEXT MEETING

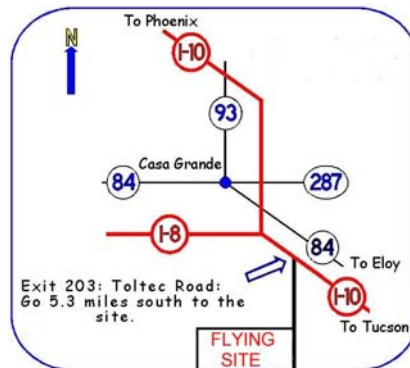
WEDNSDAY

APRIL 9th 10:00 A.M.

Our regular meeting location is under going some remodeling. So we will be at the Denny's restaurant on the S.E. corner of Rural Rd. and the Superstition freeway. There is a meeting room in the back. Veer to the left as you enter the restaurant and proceed to the back meeting room.

Bring something for 'show and tell'

NEXT CONTEST
SUNDAY
APRIL 20th
ELOY,
ARIZONA



CLUB OFFICERS

President:

Al Lidberg (480) 839 8154

Vice President:

Peter Brocks (480) 614 6183

Secretary:

Bill Sewel (623)-551-8678

bseweanthem@qwest.net

Treasurer:

Elmer Nelson

Newsletter Editor:

Steve Riley (505) 615 8112

steveriley@cableone.net

Webmaster

Alan Petersen

alan@apetersenpaintings.com

From the President's Workbench

Texan 484:

Toby Blizzard showed us the bones of his new Texan. This is the only Texan that is Nostalgia legal as the others were designed after the Nos time frames. Steve Riley started the ball rolling on this project when he got a copy of the Aerodyne plan. He and I talked about laser parts – so I drew up cad files for the wing and stab ribs and had the first sets laser cut by Bob Holman. Toby got one of the first sets and got his model together quickly. The 484 can, of course, be scaled to other sizes and be legal for Nostalgia.

Follow-on to the covering show&tell:

I talked about a model fuselage that was covered with silk and how poorly it had turned out. It had been covered with wet silk and looked very reasonable. However, when the first coat of nitrate dope dried, the silk got slack. A second coat and things got worse as was the result with a third coat. Use of a moneycoat heat gun tightened up the silk nicely, but 5 minutes later, it was slack again. By now, it looked like the product of a fancy dressmaker, but hardly like the smooth, tight result needed for model covering. I striped off the silk and redid the model with rip-stop nylon.

What I failed to do at the last meeting was to pass along the punch line. On SAM Talk, an Internet forum of SAM modelers, I brought up my silk problem and various folks chimed in, mostly talking about some modern silks that are not 'real', being probably polyester blends that won't act right. The test is to cut off a scrap of the material and set it alight with a match – the bad stuff will give off black smoke and make a sticky black ash. My K&S silk didn't do that. What finally turned out to be the answer came from Mike Myers, the SAM president. I had told SAM Talk that I'd used SIG nitrate – Mike told me to read the label on the can. Well, I've been using nitrate dope for well over 50 years, why would I bother to read the label on a can of dope? So I looked, and here's what it says, something like, "Do not use this dope with silk as it will not pull up tight." Since that time, I've used only CPC brand nitrate from Library of paints in Phoenix. What I use mostly is non-tautening nitrate, even as the first coat on Japanese tissue. On rip stop nylon and polyspan, I use straight nitrate. If I get brave enough to try silk again, I will use straight nitrate!

Above all, please remember that anything I talked about represents processes and materials that work for me. As in life, we all have to find our own way in model building. Why I even knew someone once who loved butyrate dope, but otherwise, he was probably a very fine person! ;-)

Spraying:

Harbor Freight has a compressor on sale until 4/7/08 for \$89 vs the regular price of \$129.99. This would be a good start toward a spray painting outfit for models. You will need a hose – just about any air hose they have will work. The compressor already has a regulator – the widget that lowers the compressor tank's 80-100 psi to the 15-30 psi that a small gun needs. While you're at HF, spend \$10 or so for quick-on/off hose fittings which make loading and cleaning up the gun much easier.

Harbor Freight has the 2 small spray guns that I showed at March's meeting – a conventional touch up gun and the gravity feed gun [with the tank above the nozzle.

My preference is the conventional gun as the gravity feed gun is impossible to set down – it needs a hook to hang it from. I also found that the gravity feed's little weep/air bleed hole at the top of the cap has a tendency to splash paint out – which I discovered when I ruined a nice pair of khaki pants. You can use some of the hobby shop air brushes meant for plastics modelers, but they don't really throw out enough paint for FF models. I got a lot of use out of a Badger \$10 plastic air brush which is a variation of an artist's blow gun, but made to run on cans of CO2. Mine has been adapted to run from a compressor after I used up the first can of air. By the way, compressors seem to last a long while. The one I use was bought in about 1966 because I was restoring a Model A Ford and needed to spray primer and eventually lacquer. The Ford is still not done, but the compressor still works fine. The only repairs have been the replacement of the motor's starting capacitor, a set of the cylinder's spring loaded air valves and a regulator – very minor cost items.

Glue and plan protection:

We've all been through the waxed paper phase which kind-of works. If you're using Ambroid or SIGment, it's probably OK. Then there was the saran wrap phase which works really well if you use Elmer's white glue or any of the yellow/aliphatic resin carpenter's glues. Some folks swear by Monocoat backing. But, when you want to use CA / 'Hot Stuff', none of these work at all! Lately, Tower Hobbies has been selling 'Plan Protector' as a really great product – which doesn't work with CA either. But, I have found the solution – parchment paper. Yes, it's the same stuff that the gourmet chefs use when baking pastries. You can go to the gourmet shops and pay extra, but my roll of Reynolds Parchment Paper came from Fry's grocery store, right next to the waxed paper and aluminum foil. CA glue does stick a little to parchment paper but the glue joint readily pulls off with minimal mess.

Guest editorials and Show&Tell:

Steve would really like to hear from any of you about anything you'd like to share. This can be a solution to a building or flying problem– or it could be a problem that you'd like to share for ideas. We'd also like to have you present 'whatever' at a meeting. If you'd rather not do the presenting, we'll find you a guest presenter, too!

Al Lidberg



Contest Report Spring Break March 15, 2008

The weather forecasts leading up to the contest were anything but encouraging. However, as things so often go, the weather at Eloy was different than forecast as well as different than the actual weather in Phoenix or in Tucson. We started flying in light breezes at 8:00 AM. The weather gradually improved throughout the day and by the time we quit at 3:00 PM, it was about as good as it could get. It is understandable that paying \$3 a gallon for gas to drive to Eloy to watch the wind blow is no fun at all. But it is a small risk that we will have to take. It doesn't look like gasoline is going to get much cheaper any time soon. Eight hard charging, stalwarts who came and flew had a great time. As you can see in the tables below, Dick Nelson was a busy beaver and garnered a bunch of points towards the annual club championship. Shig Saimo flew three models picking up 60 points for second place overall. Roland Lovejoy had a couple of nice long flights. On one of them he employed his and Shig's wife to recover his model in the dense undergrowth in the NW corner of the field. It was great to see Tom Gaylor who is the newest PMAC member putting a couple of models up. Mike Keller took advantage of the great flying conditions and flew four different models as well as helping his younger sister, Brianna fly successfully. She and Christian Gaylor (Tom's grandson) both flew Catapult gliders. In summary, this was a fun contest which would have been a great contest with more participants. See you at Eloy in April.

Elmer Nelson, CD

Phoenix Model Airplane Club Meeting Minutes

March 12, 2008

11 members present

OLD BUSINESS : Minutes from last meeting read corrected and approved.

NEW BUSINESS : Elmer discussed this coming Saturday's contest. He stated that we need participants. There will be six categories. If it flies bring it. There will be a class to cover most models.

Al passed around a photo of the twin pusher launch from the last SAM Contest at Las Vegas, Al was in the photo looking good. The current Bob Holman Plan Catalog was passed around. The secretary has a copy, if you want one call 623-551-8678.

Toby's 484 sq. in. Texan was passed around. It was ready to cover, a beautiful model.

Al discussed the South West Regionals Committee. The purpose of the committee is to organize and conduct the SW Regionals. They have been doing a great job.

Al read a letter from his son Michael, proposing a plan to get youth started in building and flying model airplanes. He proposed to conduct classes.

After some discussion it was proposed Mike write a curriculum plan.

It will not be free and parents must be involved.

During the last weekend of April an electric model flight contest will be conducted in the AZ Stadium.

SHOW AND TELL:

Al presented an excellent discussion on model covering materials and techniques.

Bill Sewell

**President's Cup
2-24-08**

AMA/Classic Gas (all engine classes)

Points

Contestant Name	Event	Fit 1	Fit 2	Fit3	FO 1	FO 2	FO 3	FO 4	FO 5	FO 6	Total Time	Time	Maxes	Flights	Total
Nelson, D	B/C	180	180	180	180						720	8	20	10	38
Burros, R	1/2A CL	180	180	180	156						696	6	15	10	31
Langelius, B	1/2A CL	180	172	147							499	4	5	10	19
Miller, T	A/B CL	75	135	141							351	2	0	10	12

Nostalgia Gas/OT Gas Combo (all engine displacements)

Points

Contestant Name	Event	Fit 1	Fit 2	Fit3	FO 1	FO 2	FO 3	FO 4	FO 5	FO 6	Total Time	Time	Maxes	Flights	Total
Sobala, D	A Nos	180	170	180							530	12	10	10	32
Nelson, D	OT A Fus	150	180	180							510	10	10	10	30
Nelson, D	OT B Pyl	180	180	135							495	8	10	10	28
Nelson, D	C Nos	105	180	180							465	6	10	10	26
Nelson, D	OT B Fus	162	121	180							463	4	5	10	19
Andrews, J	A Nos	180	160	12							352	2	5	10	17

2 Minute Combo (F1G/H/J, .020 Replica, P-30, Rocket, Embryo)

Points

Contestant Name	Event	Fit 1	Fit 2	Fit3	FO 1	FO 2	FO 3	FO 4	FO 5	FO 6	Total Time	Time	Maxes	Flights	Total
Brocks, P	F1G	120	120	120	128						488	6	15	10	31
Nead, B	Rocket	120	120	74							314	4	10	10	24
Keller, M	P-30	75	117	74							266	2	0	10	12

3 MinRubber/Glider Combo (Mulvihill, Moffett, OT Rubber, Nos Wake/Rubber, Classic Towln

Points

Contestant Name	Event	Fit 1	Fit 2	Fit3	FO 1	FO 2	FO 3	FO 4	FO 5	FO 6	Total Time	Time	Maxes	Flights	Total
Lovejoy, R	OT Rub	101	130	90							321	8	0	10	18
Nelson, E	CL Glider	98	148	73							319	6	0	10	16
Prescot, K	OT Rub	85	85	82							252	4	0	10	14
Keller, M	A-1	91	72	81							244	2	0	10	12
											0				0
											0				0
											0				0
Total Time for Moffett, Mulvihill is reduced by to .75 to compensate for longer max flights.															

3 Minute FAI Combo (F1A, F1B, F1C, F1P, F1Q)

Points

Contestant Name	Event	Fit 1	Fit 2	Fit3	FO 1	FO 2	FO 3	FO 4	FO 5	FO 6	Total Time	Time	Maxes	Flights	Total
Farmer, Joe	F1A	180	180	180	180						720	10	15	10	35
Nelson, E	F1B	180	180	180							540	8	15	10	33
Brocks, P	F1A	147	180	180							507	6	10	10	26
Farmer, Jim	F1A	180	180	147							507	4	10	10	24
Nelson, E	F1A	99	64	80							243	2	0	10	12

Catapult /Hand Launched Glider Combo

Points

Contestant Name	Event	Fit 1	Fit 2	Fit3	Fit 4	Fit 5	Fit 6	FO 1	FO 2	FO 3	Total Time	Time	Maxes	Flights	Total
Brocks, P	Cat	80	120	120							320	8	10	10	28
Nelson, E	Cat	115	120	107							342	10	5	10	25
Keller, M	Cat	55	109	120							284	6	5	10	21
Keller, M	HLG	20	39	120							179	4	5	10	19
Brocks, P	HLG	64	53	42							159	2	0	10	12
											0				0
											0				0
											0				0

Junior Catapult /Hand Launched Glider Combo

Points

Contestant Name	Event	Fit 1	Fit 2	Fit3	Fit 4	Fit 5	Fit 6	FO 1	FO 2	FO 3	Total Time	Time	Maxes	Flights	Total
											0				0
											0				0
											0				0
											0				0

Spring Break
3-15-08

AMA/Classic Gas (all engine classes)

Points

Contestant Name	Event	Flt 1	Flt 2	Flt3	FO 1	FO 2	FO 3	FO 4	FO 5	FO 6	Total Time	Time	Maxes	Flights	Total
											0				0
											0				0

Nostalgia Gas/OT Gas Combo (all engine displacements)

Points

Contestant Name	Event	Flt 1	Flt 2	Flt3	FO 1	FO 2	FO 3	FO 4	FO 5	FO 6	Total Time	Time	Maxes	Flights	Total
Dick Nelson	C Nos	180	180	180	121						661	12	15	10	37
Dick Nelson	OT Gas B	180	180	145							505	10	10	10	30
Dick Nelson	OT Gas A	70	170	108							348	8		10	18
Elmer Nelson	1/2A Nos	46	180	11							237	6	5	10	21
Dick Nelson	OT Gas C	180									180	4	5	3	12
Tom Gaylor	1/4A Nos	22	10	1							33	2		10	12

2 Minute Combo (F1G/H/J, .020 Replica, P-30, Rocket, Embryo)

Points

Contestant Name	Event	Flt 1	Flt 2	Flt3	FO 1	FO 2	FO 3	FO 4	FO 5	FO 6	Total Time	Time	Maxes	Flights	Total
Shig Saimo	P-30	83	120	120							323	6	10	10	26
Mike Keller	P-30	60	120	120							300	4	10	10	24
Mike Keller	P-20	44	38	51							133	2	0	10	12

3 MinRubber/Glider Combo (Mulvihill, Moffett, OT Rubber, Nos Wake/Rubber, Classic Towline)

Points

Contestant Name	Event	Flt 1	Flt 2	Flt3	FO 1	FO 2	FO 3	FO 4	FO 5	FO 6	Total Time	Time	Maxes	Flights	Total
Roland Lovejoy	OT Rub	139	81	180							400	10	5	10	25
Shig Saimo	Nos Wake	89	107	130							326	8		10	18
Shig Saimo	OT Rub	93	68	112							273	6		10	16
Elmer Nelson	CL Tow	36	125	75							236	4		10	14
Tom Gaylor	OT Rub	36	60	57							153	2		10	12
											0				0
											0				0
Total Time for Moffett, Mulvihill is reduced by to .75 to compensate for longer max flights.															

3 Minute FAI Combo (F1A, F1B, F1C, F1P, F1Q)

Points

Contestant Name	Event	Flt 1	Flt 2	Flt3	FO 1	FO 2	FO 3	FO 4	FO 5	FO 6	Total Time	Time	Maxes	Flights	Total
Elmer Nelson	F1A	156	112	102							370	2	0	10	12

Catapult /Hand Launched Glider Combo

Points

Contestant Name	Event	Flt 1	Flt 2	Flt3	Flt 4	Flt 5	Flt 6	FO 1	FO 2	FO 3	Total Time	Time	Maxes	Flights	Total
Mike Keller	Cat Gl	83	47	107							237	6		10	16
Elmer Nelson	Cat Gl	120	34	47							201	4	5	10	19
Mike Keller	OHLG	44	51	54							149	2		10	12
											0				0
											0				0
											0				0
											0				0
											0				0

Junior Catapult /Hand Launched Glider Combo

Points

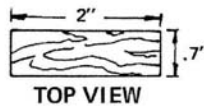
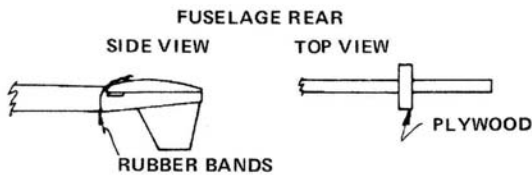
Contestant Name	Event	Flt 1	Flt 2	Flt3	Flt 4	Flt 5	Flt 6	FO 1	FO 2	FO 3	Total Time	Time	Maxes	Flights	Total
Briana Keller	Cat Gl	84	85	120							289	4	5	10	19
Christian Gaylor	Cat Gl	16	17	16							49	2		10	12
											0				0
											0				0

2008 Contest Ladder Summary

	2/24/2008	3/15/2008	4/20/2008	5/17/2008	9/14/2008	10/25/2008	11/16/2008	12/6&7/08	Total
Dick Nelson	141	97							238
Elmer Nelson	86	66							152
Mike Keller	64	64							128
Peter Brocks	97	0							97
Shig Saimo		60							60
Roland Lovejoy	18	25							43
Joey Farmer	35								35
Dan Sobala	32								32
Randy Burros	31								31
Ben Nead, SR	24								24
Jim Farmer	24								24
Tom Gaylor		24							24
Bill Langelius	19								19
Briana Keller		19							19
Jean Andrews	17	0							17
Kent Prescott	14								14
Tom Miller	12								12
Christian Gaylor		12							12

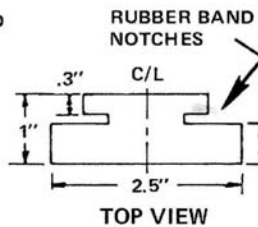
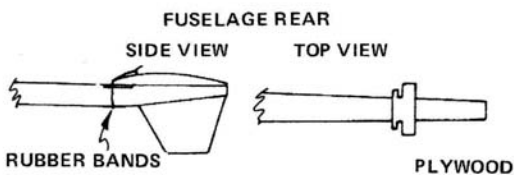
STAB MOUNT DETAIL SKETCHES

(1) "STANDARD" STAB MOUNT



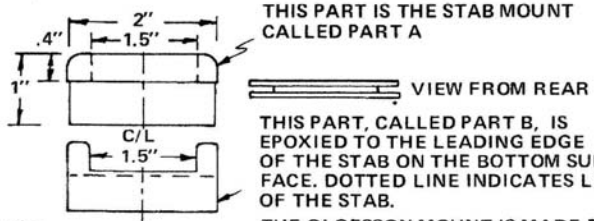
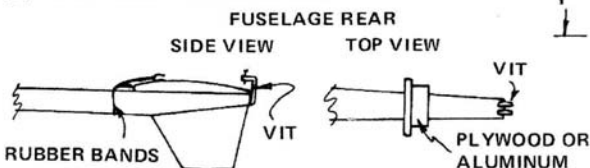
THIS MOUNT IS SIMPLY A PIECE OF 3/32 PLYWOOD APPROXIMATELY THE STATED SIZE - FOR 1/2A OR SMALL A GAS MODELS *

(2) S.H.O.C. MOUNT



THIS MOUNT IS SHAPED AS ILLUSTRATED FROM 3/32 PLYWOOD FOR 1/2A OR A SIZED MODELS, NORDICS, AND WAKEFIELD. LARGER DIMENSIONS FOR LARGER MODELS.

(3) OLOFSSON STYLE MOUNT



THIS PART IS THE STAB MOUNT CALLED PART A

THIS PART, CALLED PART B, IS EPOXIED TO THE LEADING EDGE OF THE STAB ON THE BOTTOM SURFACE. DOTTED LINE INDICATES LE OF THE STAB.

THE OLOFSSON MOUNT IS MADE FROM 1/16 SHEET ALUMINUM OR 3/32 PLY. PART B SLIDES INTO PART A. FOR 1/2A MODELS OR FAI.

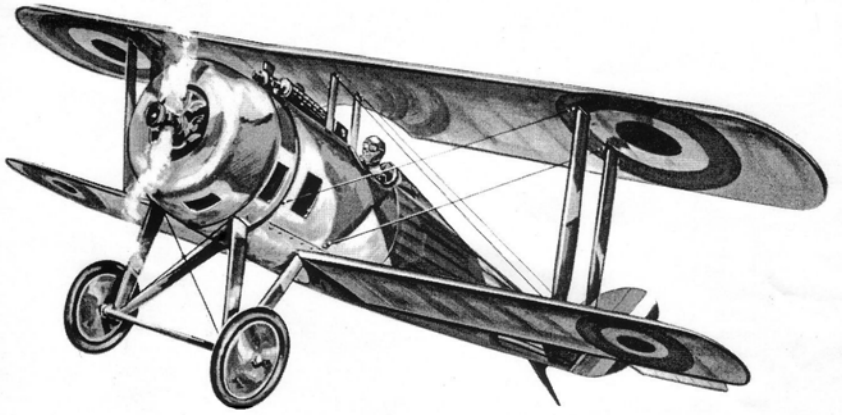
*All mounts shown should be enlarged to fit larger models

2008
PMAC/TFFC
CONTEST SCHEDULE

December 14, 2007

	Nat'l Cup	Nat'l Cup	Nat'l Cup	Nat'l Cup	Nat'l Cup	Nat'l Cup	Nat'l Cup	America & National Cup	
	President's Cup	Spring Break	I-10 Challenge	Hot Stuff	Fall Kick-off	Ghost Riders	Turkey Shoot	Arizona Free Flight Championships	
	Sunday	Saturday	Sunday	Saturday	Sunday	Saturday	Sunday	Saturday	Sunday
	2/24/2008	3/15/2008	4/20/2008	5/17/2008	9/14/2008	10/25/2008	11/16/2008	12/6/2008	12/7/2008
GAS EVENTS								8	7
AMA 1/2 A GAS	(Jr) (SO)	(Jr) (SO)	(Jr) (SO)	(Jr) (SO)	(Jr) (SO)	(Jr) (SO)	(Jr) (SO)	(Jr) (SO)	
AMA A/B GAS	X	X	X	X	X	X	X		X
AMA C/D GAS	X	X	X	X	X	X	X	X	
AMA Classic 1/2A Gas	(Jr) (SO)	(Jr) (SO)	(Jr) (SO)	(Jr) (SO)	(Jr) (SO)	(Jr) (SO)	(Jr) (SO)		(Jr) (SO)
AMA Classic AB Combo	X	X	X	X	X	X	X		X
AMA Classic CD Combo	X	X	X	X	X	X	X	X	
NOS 1/4 A	X	X	X	X	X	X	X	X	
NOS 1/2 A GAS	X	X	X	X	X	X	X		X
NOS A GAS	X	X	X	X	X	X	X	X	
NOS B/C GAS Combo	X	X	X	X	X	X	X	C	B
NOS Early 1/2 A Gas	X	X	X	X	X	X	X		X
OT .020 REPLICA	X	X	X	X	X	X	X	X	
OT GAS COMBO	X	X	X	X	X	X	X		X
OT RC	X	X	X	X	X	X	X	X	
Rubber Events								4	3
P-30	(Jr) (SO)	(Jr) (SO)	(Jr) (SO)	(Jr) (SO)	(Jr) (SO)	(Jr) (SO)	(Jr) (SO)	(Jr) (SO)	
NOS RUB, Nos Wake, & Combo	X	X	X	X	X	X	X	Nos Wake	Nos Rub
OT Fus Combo Rubber	X	X	X	X	X	X	X	X	
OT Stick Combo Rubber	X	X	X	X	X	X	X		X
MULVIHILL	X	X	X	X	X	X	X		X
MOFFETT	X	X	X	X	X	X	X	X	
FAI Events								3	3
F1A/F1B/F1C Combo	X	X	X	X	X	X	X	F1A,F1B,F1C	
F1G/F1H/F1J Combo	X	X	X	X	X	X	X		F1G,F1H,F1J
GLIDER EVENTS								1	2
H L GLIDER	(Jr) (SO)	(Jr) (SO)	(Jr) (SO)	(Jr) (SO)	(Jr) (SO)	(Jr) (SO)	(Jr) (SO)	(Jr) (SO)	
CAT GLIDER	(Jr) (SO)	(Jr) (SO)	(JR)(SO)	(Jr) (SO)	(Jr) (SO)	(Jr) (SO)	(Jr) (SO)		(Jr) (SO)
Classic Glider	X	X	X	X	X	X	X		X
Contest Directors	Lichtenberge	E. Nelson	Brocks	Strang	Loeffler	D.Nelson	Andrews	Burros/E.Nelson	
Contest Classification	A	A	A	A	A	A	A	AA	AA
Total Events	25	25	25	25	25	25	25	16	15

Note: All one day contests will be flown in combined categories. Essentially, anything you bring to the field can be flown in one of six categories



NEXT MEETING
WEDNSDAY

APRIL 9th
DETAILS INSIDE

NEXT CONTEST
APRIL 20th

ELOY

PHOENIX

MODEL AIRPLANE CLUB

Steve Riley

605 La Casa De Prasa Dr. S.E.

Rio Rancho, New Mexico 87124