

WHAM

NEWS, VIEWS, and REVIEWS

Official Publication of the
Wichita Historical Aircraft Modelers, SAM 56, and
the Kansas Sunflower Squadron, FAC Squadron #23

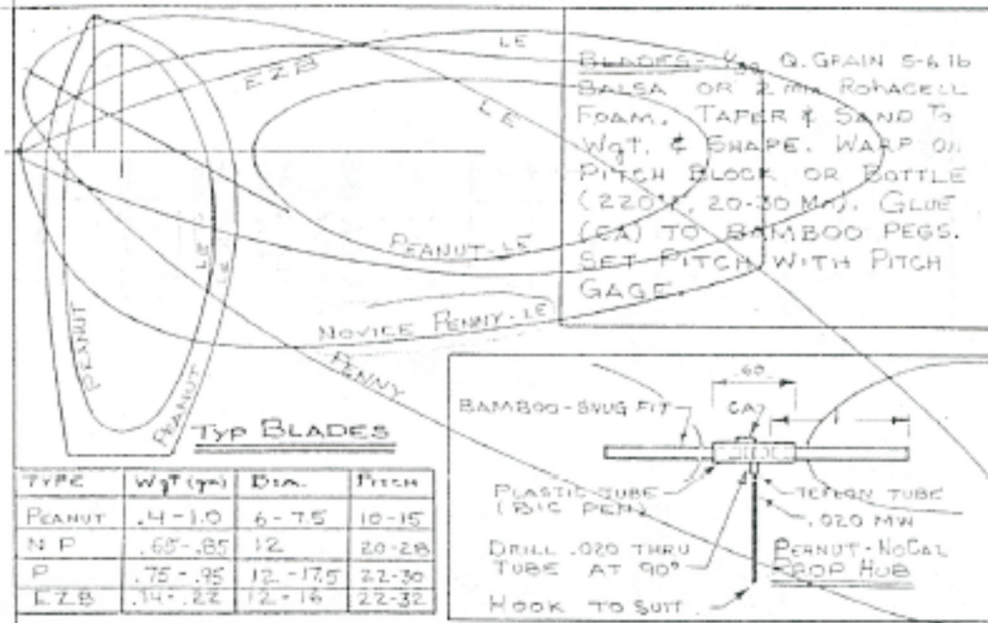


Issue JE2-15
January 2024

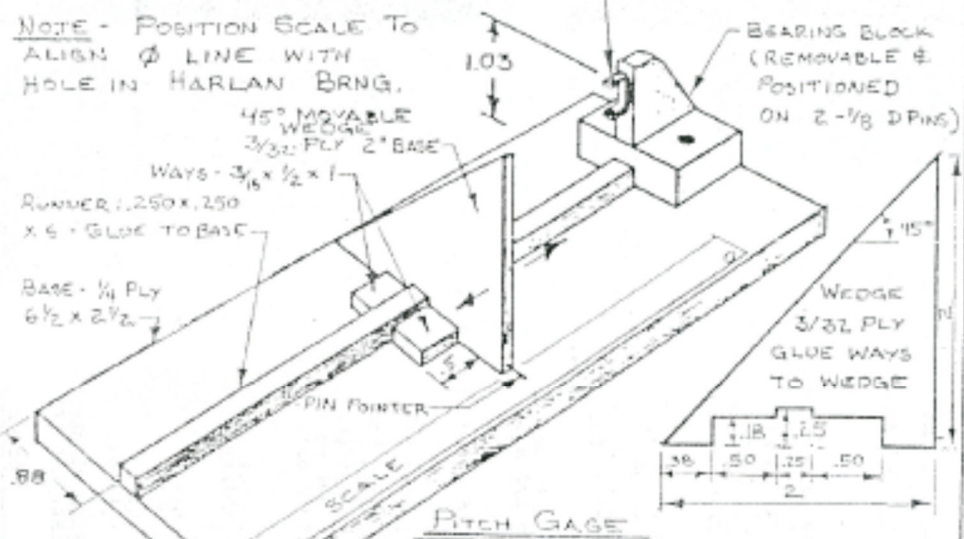
MINNEAPOLIS MODEL AERO CLUB
MINNEAPOLIS MODEL AERO CLUB

March - April 1990
March - April 1990

Page 1
Page 1



SCALE (FULL SCALE) P = 2 TIT TAND



BUILDING INDOOR PROPELLERS
PEANUT, NOCAL, BOSTONIAN, ETC.
LESTER W GARDNER 2324 E 5TH ST.
JAN 90 *LWG* DULUTH, MN 55812

MAKING INDOOR PROPS
An article originally printed in the
April 1990 issue of the Minneapolis
Model Aero Club Newsletter



November 4, 2023, Meeting Minutes

ATTENDEES:

Jeff Englert, Regina & Marty Kline, Kent Peters, Linda & Chuck Powell, Marlene Hayes & Ed Salguero, and Marilyn & Bill Schmidt

President Powell called the meeting to order; Minutes were approved as delivered.

No treasurer's report.

OLD BUSINESS:

None

NEW BUSINESS:

Wellington contest was reported. Windy conditions caused problems.

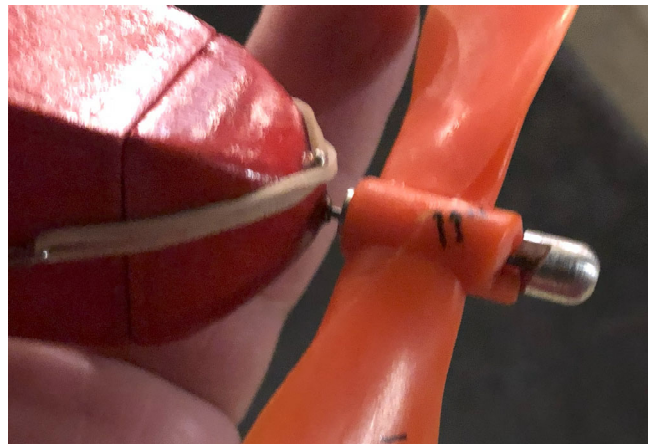
Officer elections resulted in a clean sweep – with the current slate running unopposed.

SHOW AND TELL:

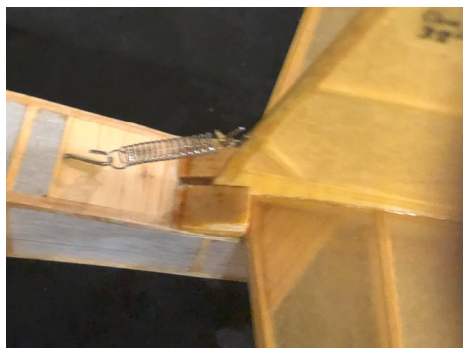
Bill Schmidt brought in a 1940 design of the Cleveland Flemish Defiant to show. Built in 1994, it is almost 40 years old. Conceived by Cleveland as one of a series in a 'Tribute to Brave Nations', which were under Nazi attack. He did admit that he had to recover the fuselage.

Bill incorporated a couple of changes;

1. A removable prop ramp engagement device. It uses an allen-screw to attach.



2. He has also eliminated his use of rubber bands to power the Dethermalizer. He is using springs (mainly because when he does they rot while hanging in the basement).
- 3.



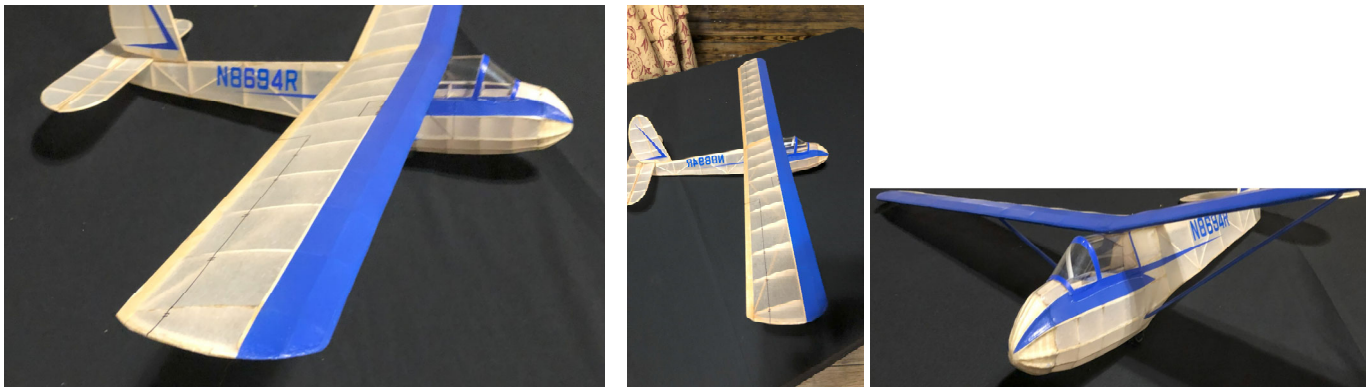
Bill also had a 1949 Comet Stratus, that he built on 9 years ago. He remembers this as his first model building adventure. Un-believably, he states he was unsuccessful in building it back then.



Ed Salguero displayed a 24" wingspan Fokker D-VII. He built his 20 years ago using his own plans based on the Joe Nieto 3-view that was available form MAN.



Chuck Powell showed his Schweizer 2-32 model constructed from the Volare laser-cut short kit. His color scheme matches one he has been flying out of the old glider port west of Wichita.



WHAM – News, Views, and Reviews

Jeff Englert
10118 Sterling Court
Wichita, KS 67205



The next SAM 56 Dinner Meeting will be at:

Mediterranean Grill

335 S Towne East Mall Dr., Wichita, KS 67207

(316) 651-5599

Saturday, January 20, 2024

Social Hour @ 6:00 PM, Dinner @ 6:30 PM...

Upcoming events:

Membership Information:

Open to all interested AMA members, founded to encourage and promote model airplane building.
Member dues \$20 annually, Subscription only; \$12 annually, \$18 foreign.

Club Officers:

President: Chuck Powell,
Treasurer: Phil Burress,

Vice-President: Marty Kline
Secretary: Jeff Englert, 722-7491