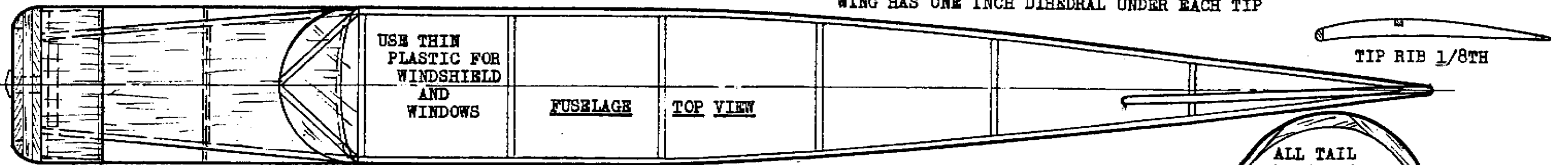
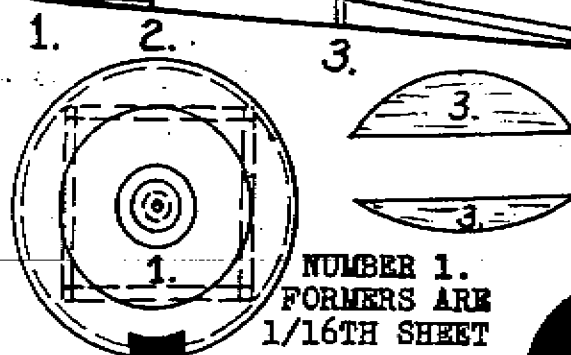
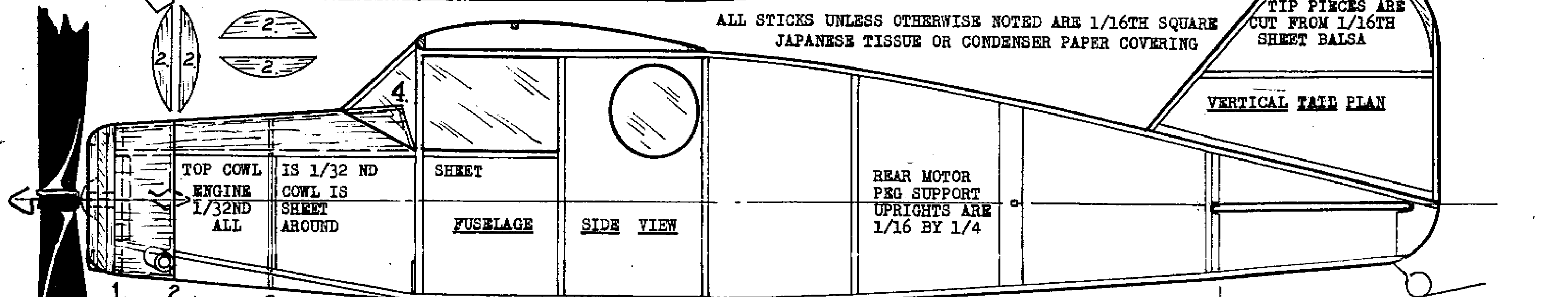


WING HAS ONE INCH DIHEDRAL UNDER EACH TIP



ALL STICKS UNLESS OTHERWISE NOTED ARE 1/16TH SQUARE JAPANESE TISSUE OR CONDENSER PAPER COVERING

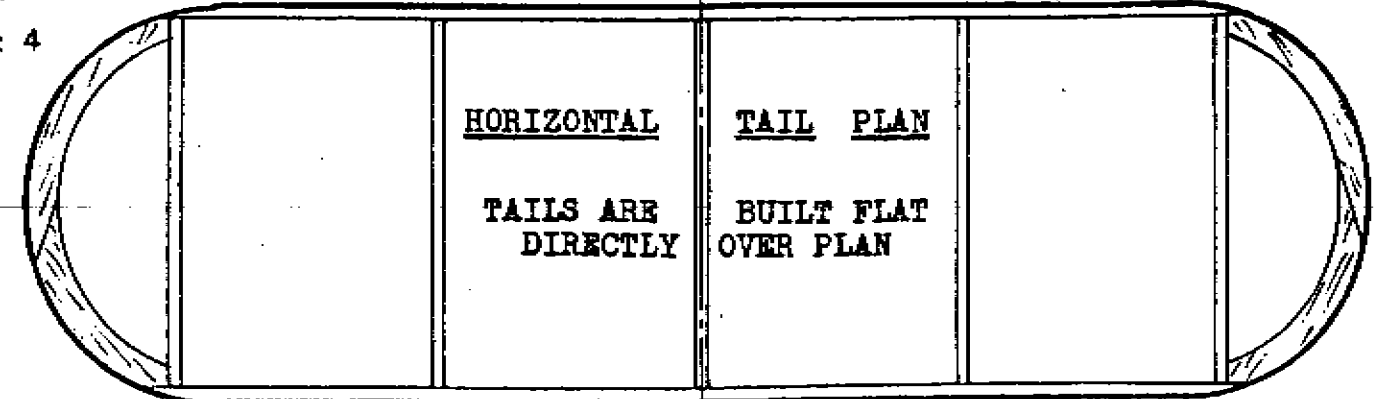
ALL TAIL TIP PIECES ARE CUT FROM 1/16TH SHEET BALSA



1/32 SHEET LANDING GEAR FAIRINGS

CUT FORMERS 2,3,& 4 FROM 1/32 SHEET

NOSE BLOCK IS LAMINATED FROM FIVE LAYERS OF 3/32 SHEET



"THE BACK BAY BELLANKA" A BOSTONIAN BY

*Walt Moore*